



@IOPteam



# Health, Housing and Social Care 'In One Place'

Together we can make a difference

*Joanne Lewis-jones, Programme Officer*





@IOPteam



# Overview

- Key Policy Drivers – why we are doing what we are doing
- What is in one place
- The in one place team and Governance
- How it works
- Benefits to collaboration
- Barriers to collaboration
- Development programme
- In One Place in Action



@IOPteam



# Key Policy Drivers

- Social Care and Wellbeing (Wales) Act 2014
- *Housing Act 2014*
- *Health Homes, Healthy Lives, 2012*
- *Together for Health – setting out direction for NHS in Wales, and a partnership approach*
- *Williams Commission Report– Reforming Local Government*
- *‘Shared purpose, shared delivery’ Welsh Government 2012*
- *Reviews – i.e. Winterbourn*

# The most powerful driver?

***“ I do not want to live in Hospitals anymore I am fed up of them. I just want to live where I want to not where I am told to.....I want to be in control of my life again. I want to live in my own flat, nothing fancy, but my own home”***

*(Patient on a locked rehab ward)*



# What is In One Place?

- A new model of collaboration between Health, Social Care and Housing 'In One Place'
- Supported by Aneurin Bevan Health Board, 5 Local Authorities, 8 Registered Social Landlords and the Welsh Government
- Aim is to work together to streamline the process of obtaining suitable, local accommodation for people with complex health and social care needs.

Bron Afon





@IOPteam



# The 'In One Place' Team

Programme Manager – Christopher Edmunds

Programme Officer – Joanne Lewis-Jones

Programme Administrator – Beverley Anderson

We facilitate the programme that is steered by 40 representatives that sit on the Professional Network from the ABUHB, LA's and Housing Associations.

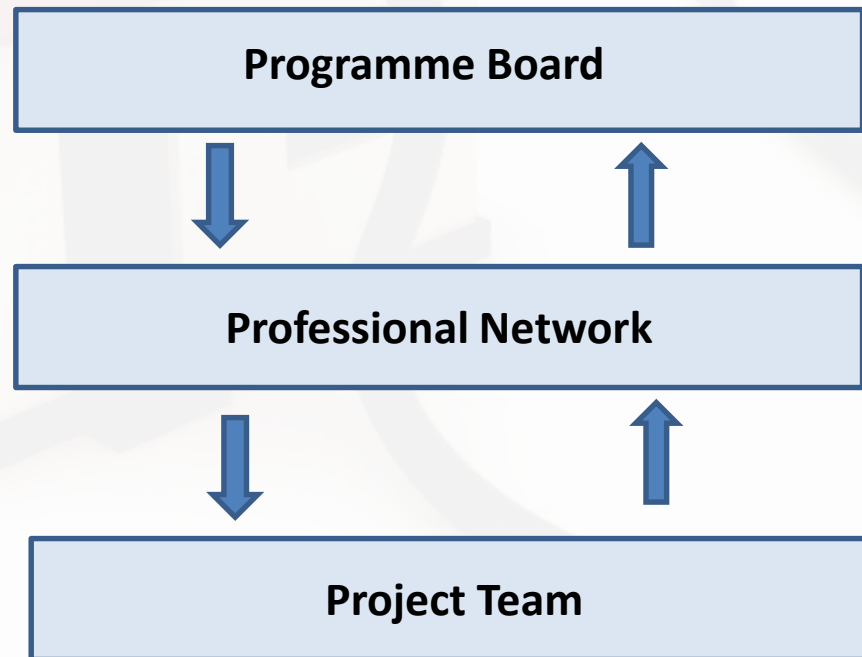


@IOPteam



# In One Place Governance/Operational Structure

The governance structure of the 'In One Place' model is illustrated as follows:







@IOPteam



# How it works.....

## 2 step approach - now and in the future

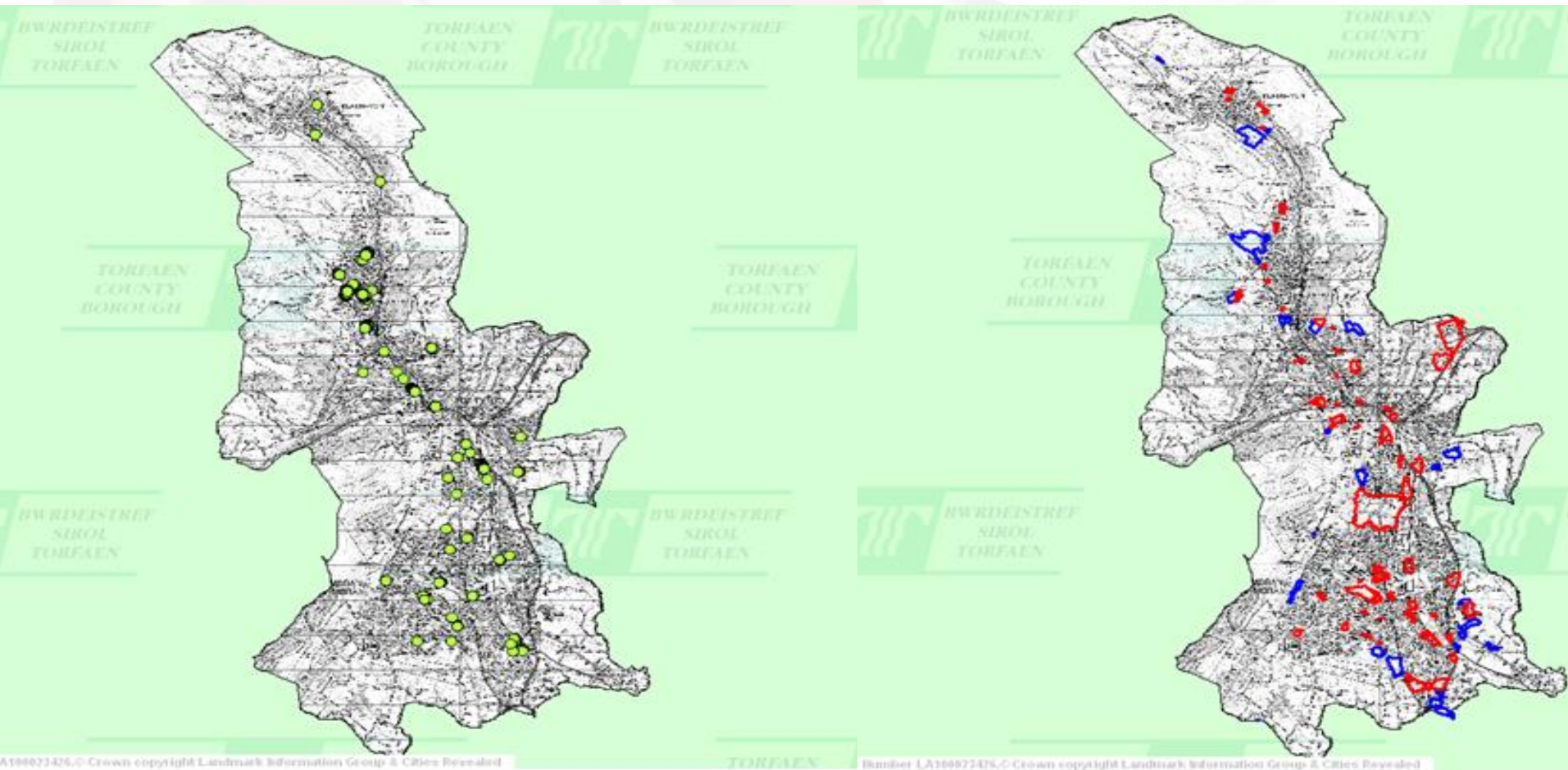
**Now** - We can look at what is available through the Housing Registers or existing/void properties.



Cyngor Bwrdeistref Sirol  
**Blaenau Gwent**  
County Borough Council



**Future** – We need to strategically plan for forthcoming need.





@IOPteam



# Benefits to collaboration

- Supports the delivery of health, social care and housing strategies
- Timely provision
- Local provision
- Improvement in governance
- Enables service users to have the same rights
- Cost Benefit
- Consistency of residency

# Overcoming barriers

- Health, Social Care and Housing – different worlds; different words
- Lack of needs analysis
- Timescales
- Legal and legislative
- Funding
- Voids – who pays?
- Communication
- Attitudes

# **In One Place Programme of Developments 15/16**

## **So far.....**

- Torfaen 2 (6 service users)
- Newport1 (6 Service users)
- Blaenau Gwent (5 service Users)
- Caerphilly (6 Service users)
- Monmouthshire (5 service users) –
- Project groups set up to tackle DTOC
- Many more in the pipeline.....

# In One Place In Action.....



.....Open November 2015



@IOPteam



***“I am thankful for places like this to live because I know it is my last chance to move forward with my life. I appreciate what everyone has done for me and the flat has given me the chance to move on”***

*Service User*



@IOPteam



“Competition  
makes us  
Faster;  
Collaboration  
makes us  
Better.”



In One Place In Action .....



..... Lion Court, Blaenavon

## Who are Melin Homes?

- Social landlord based in Pontypool
- Own and manage approx 3,800 properties
- Majority rented – some leasehold and shared ownership
- Own housing stock in Torfaen, Newport, Monmouthshire, Blaenau Gwent and South Powys
- Governed by a Board and regulated by Welsh Government

- 4 units of accommodation were identified for inclusion in the IOP Programme
- 3 units for service users and 1 for the support provider
- Shared kitchens and living rooms
- Existing Melin accommodation – not purpose built for IOP
- Part of a wider scheme of houses and flats let to families, single people and residents aged 55+

- A MDT was set up to include reps from Health, Social Care and Melin
- Local Councillors and partner agencies consulted
- Support provider appointed and commissioned through CHC/Social Care as previously done
- All residents have individual tenancy agreements
- Rent is paid for by Housing Benefit
- Allowed for transition

- Two service users identified by the Mental Health division
- One transferred from a hospital ward and one from an out of county low secure setting
- 24 hour support provided at Lion Court by Liberty Care
- Third service user also identified by the Mental Health division
- Transferred from a hospital ward
- Undertaking voluntary work in Blaenavon

- All settled in well to the accommodation and the community
- Not always straightforward but collaboratively obstacles were overcome
- One service user – moved on from Lion Court into accommodation with support 9am-5pm
- No longer needs 24 hour support
- Project helped to develop independent living skills and confidence

- Worked with Health and IOP Team to identify new resident
- Service user identified by the Mental Health division
- Transition to move from a hospital ward to Lion Court
- Take pride in their accommodation
- Have mixed well with each other
- Project has settled well in the community



Melin is more than just a social landlord:

- Long-term investment in communities
- Work in partnership to make a difference
- Tailor our services to meet residents' needs
- Melin Works: offers our residents training and support to help them find work





Thank You for Listening.  
Any Questions?